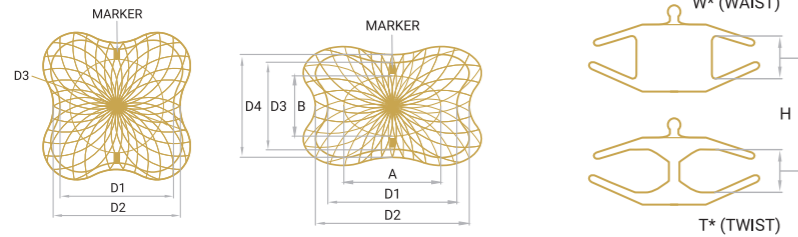


Product specifications & ordering information



SQUARE:
 D1: PROXIMAL DISC LENGTH
 D2: DISTAL DISC LENGTH
 D3: WAIST DIAMETER (ONLY FOR SQUARE W*)

RECTANGULAR:
 AxB: WAIST LENGTH TO WIDTH (ONLY FOR RECTANGULAR W*)
 D1xD3: PROXIMAL DISC LENGTH TO WIDTH
 D2xD4: DISTAL DISC LENGTH TO WIDTH

GENERAL:
 H: HEIGHT OF THE WAIST (3 mm FOR ALL SIZES)

Occlutech PLD Occluder ¹ Ref. No.	[mm]	[mm]	[mm]	ODS III* 45°, 1100 mm (Size)	Occlutech Procedure Pack** Flex Pusher I Ref. No.	Occlutech Procedure Pack** Pistol Pusher Ref. No.
SQUARE WAIST						
	D1	D2	D3			
60PLD04W	7.5	9	4	98DL006 (6F)	60PLD04WF	60PLD04WP
60PLD05W	8.5	10	5	98DL006 (6F)	60PLD05WF	60PLD05WP
60PLD06W	9.5	11	6	98DL006 (6F)	60PLD06WF	60PLD06WP
60PLD07W	10.5	12	7	98DL007 (7F)	60PLD07WF	60PLD07WP
SQUARE TWIST						
	D1	D2	Defect Size			
62PLD03T	7	8	3	98DL006 (6F)	62PLD03TF	62PLD03TP
62PLD05T	8.5	10	5	98DL006 (6F)	62PLD05TF	62PLD05TP
62PLD07T	11	12	7	98DL007 (7F)	62PLD07TF	62PLD07TP
RECTANGULAR WAIST						
	AxB	D1xD3	D2xD4			
61PLD04W	4x2	8x6	9x7	98DL006 (6F)	61PLD04WF	61PLD04WP
61PLD06W	6x3	10x7	11x8	98DL006 (6F)	61PLD06WF	61PLD06WP
61PLD08W	8x4	12x8	14x10	98DL007 (7F)	61PLD08WF	61PLD08WP
61PLD10W	10x4	14x8	16x10	98DL008 (8F)	61PLD10WF	61PLD10WP
61PLD12W	12x5	16x9	17x10	98DL009 (9F)	61PLD12WF	61PLD12WP
61PLD14W	14x6	19x11	21x13	98DL009 (9F)	61PLD14WF	61PLD14WP
61PLD16W	16x8	20x12	23x14	98DL010 (10F)	61PLD16WF	61PLD16WP
61PLD18W	18x10	22x14	24x16	98DL010 (10F)	61PLD18WF	61PLD18WP
RECTANGULAR TWIST						
	Defect Size	D1xD3	D2xD4			
63PLD05T	5x3	9x6	10x8	98DL006 (6F)	63PLD05TF	63PLD05TP
63PLD07T	7x4	11x8	12x9	98DL007 (7F)	63PLD07TF	63PLD07TP
63PLD10T	10x4	14x8	16x10	98DL008 (8F)	63PLD10TF	63PLD10TP
63PLD12T	12x5	16x9	17x11	98DL009 (9F)	63PLD12TF	63PLD12TP

* Ordered separately. ** Depending on availability in your country.

References:

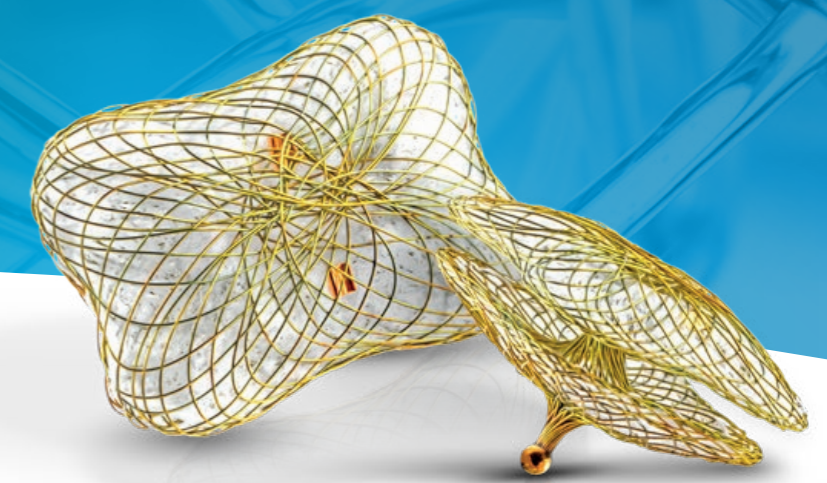
1. P17.05.002.07_Compatibility Chart PLD_ver07
2. Onorato, E. M. et al. Safety, Efficacy and Long-Term Outcomes of Patients Treated with the Occlutech Paravalvular Leak Device for Significant Paravalvular Regurgitation (2022).
3. Onorato, E. M. et al. Midterm Procedural and Clinical Outcomes of Percutaneous Paravalvular Leak Closure with the Occlutech Paravalvular Leak Device. EuroIntervention 15, 1251–1259 (2020).

Occlutech is a leading specialist provider of minimally invasive cardiac devices

Our mission is to improve the quality of life for people with heart conditions. The vision is to become a leading global specialist in cardiac devices, addressing congenital heart defects, stroke prevention and heart failure – because every beat counts for people living with heart conditions.

Occlutech PLD Occluder Unique designs for effective closure

Rectangular and Square with Waist or Twist



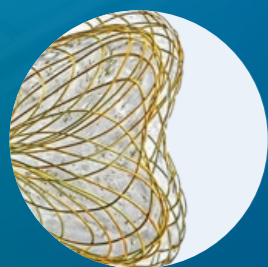
Occlutech International AB
 Landskronavägen 2, SE-252 32 Helsingborg, Sweden
 order@occlutech.com, www.occlutech.com

Not approved or available for sale in the United States. Not available in all geographies. Please contact your Occlutech representative about the availability of Occlutech products in your area © Occlutech. All rights reserved. Occlutech is a registered trademark. MM_PLD_002_02

Control and design



Two gold markers to facilitate optimal positioning



Effective closure with minimal valve leaflet interference³



Repositionable and fully retrievable design



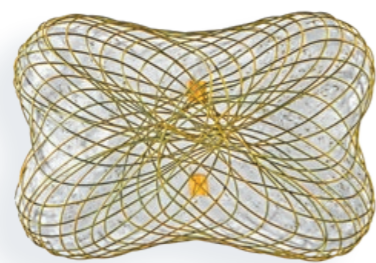
Unique designs for effective closure

Efficiency & Versatility

The Occlutech PLD Occluder is an ideal device for closing paravalvular leaks as it offers a range of unique features.

- High first-attempt success rate²
- High technical success rate in both Mi and Ao PVLs²
- High efficiency in mean procedural time²
- Different access routes including antegrade transseptal puncture, retrograde, and transapical
- Different design options for different Paravalvular leak morphologies

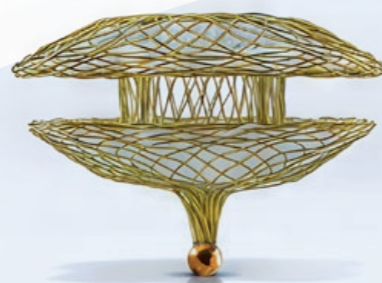
Rectangular



Square



W = Waist



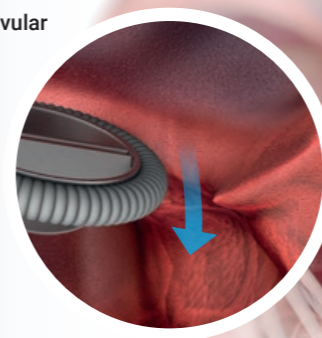
T = Twist

Connection diameter is negligible

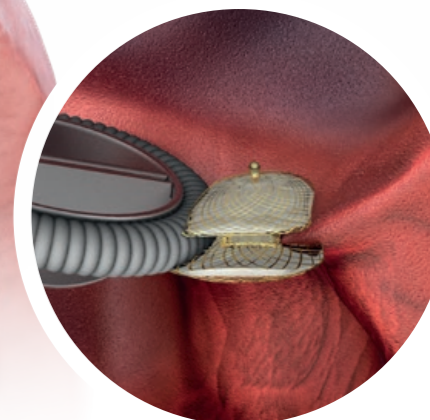


Example of Wais & Twist shown on an Occlutech PLD Occluder Square.

Paravalvular leak



Occlutech PLD Occluder delivered



The Occlutech PVL Registry includes data from 144 patients across 21 sites in 10 countries, representing one of the largest multicenter datasets in paravalvular leak closure; results shown below reflect 6-month follow-up

87.3% Clinical Success

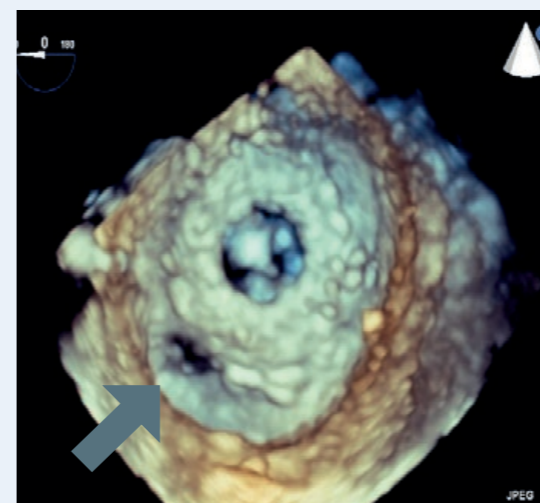
Reduction of NYHA class, no blood transfusion and no serious device/procedure-related complication²

94.5% Effective PVL Closure

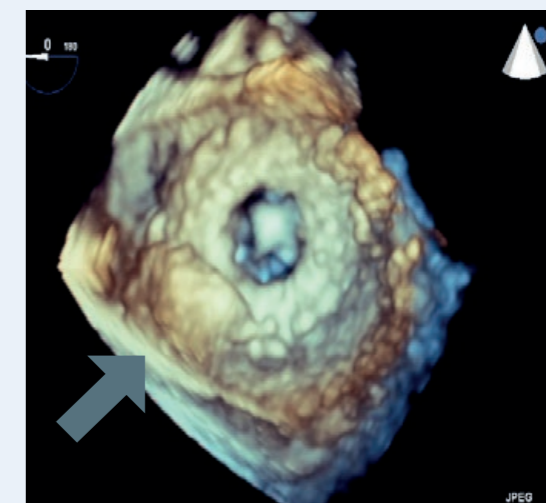
Reduction in paravalvular regurgitation by ≥ 1 grade and/or reduction in the number of hemolysis related transfusions²

96.4% No Blood Transfusion

Of Patients didn't require blood transfusion²



Typical half-moon shaped paravalvular leak.



Paravalvular leak closed with Occlutech PLD Occluder (61PLD10W).