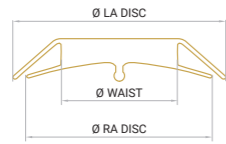
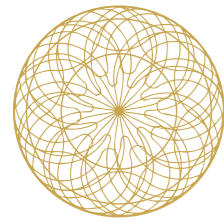


# Product specifications & ordering information



Ø LA DISC: LEFT ATRIAL DISC DIAMETER  
 Ø WAIST: MAX. WAIST DIAMETER  
 Ø RA DISC: RIGHT ATRIAL DISC DIAMETER

Occlutech ASD Occluder Ref. No.	AS Defect Size (D) [mm]	Ø Waist [mm]	Ø LA Disc [mm]	Ø RA Disc [mm]	ODSv1* 45°, 800 mm (Size)	ODS III* 45°, 790 mm (Size)	Occlutech Procedure Pack Flex Pusher II Ref. No.	Occlutech Procedure Pack Pistol Pusher Ref. No.
29ASD04	D≤4	4	11	9	51DS007 (7F)	98DS006 (6F)	29ASD04F	29ASD04P
29ASD05	4<D≤5	5	14	11	51DS007 (7F)	98DS006 (6F)	29ASD05F	29ASD05P
29ASD06	5<D≤6	6	16.5	12.5	51DS007 (7F)	98DS006 (6F)	29ASD06F	29ASD06P
29ASD07	6<D≤7.5	7.5	18	14	51DS007 (7F)	98DS006 (6F)	29ASD07F	29ASD07P
29ASD09	7.5<D≤9	9	20.5	16.5	51DS007 (7F)	98DS006 (7F)	29ASD09F	29ASD09P
29ASD10	9<D≤10.5	10.5	22	18	51DS007 (7F)	98DS006 (7F)	29ASD10F	29ASD10P
29ASD12	10.5<D≤12	12	27	23	51DS009 (9F)	98DS008 (8F)	29ASD12F	29ASD12P
29ASD13	12<D≤13.5	13.5	28.5	24.5	51DS009 (9F)	98DS008 (8F)	29ASD13F	29ASD13P
29ASD15	12<D≤15	15	30	26	51DS009 (9F)	98DS008 (8F)	29ASD15F	29ASD15P
29ASD16	15<D≤16.5	16.5	31.5	27.5	51DS009 (9F)	98DS008 (8F)	29ASD16F	29ASD16P
29ASD18	15<D≤18	18	33	29	51DS009 (9F)	98DS008 (8F)	29ASD18F	29ASD18P
29ASD19	16.5<D≤19.5	19.5	34.5	30.5	51DS010 (10F)	98DS009 (9F)	29ASD19F	29ASD19P
29ASD21	18<D≤21	21	36	32	51DS011 (11F)	98DS010 (10F)	29ASD21F	29ASD21P
29ASD24	21<D≤24	24	39	35	51DS011 (11F)	98DS010 (10F)	29ASD24F	29ASD24P
29ASD27	24<D≤27	27	42	38	51DS012 (12F)	98DS011 (11F)	29ASD27F	29ASD27P
29ASD30	27<D≤30	30	45	41	51DS012 (12F)	98DS011 (11F)	29ASD30F	29ASD30P
29ASD33	30<D≤33	33	48	43	51DS012 (12F)	98DS012 (12F)	29ASD33F	29ASD33P
29ASD36	33<D≤36	36	52	46	51DS012 (12F)	98DS014 (14F)	29ASD36F	29ASD36P
29ASD39	36<D≤39	39	54	49	51DS012 (12F)	98DS014 (14F)	29ASD39F	29ASD39P
29ASD40	39<D≤40	40	55	50	51DS012 (12F)	98DS014 (14F)	29ASD40F	29ASD40P

\* Occlutech ASD Occluder is compatible with Occlutech Delivery Set, ODSv1 (Article no.: 51DSXXX, 45°) and Occlutech Delivery Set III, ODS III (Article no.: 98DSXXX, 45°).

### References:

1. Data on file
2. ASD\_CER\_ver15, data on file
3. Kenny D et al., Catheter Cardiovasc Interv. 2019 Feb 1;93(2):316-321
4. Haas NA et al., Catheter Cardiovasc Interv. 2016 Oct;88(4):571-581
5. Leong MC et al., Cardiol Young. 2022 Oct;32(10):1621-1627
6. Nakayama et al., Heart Vessels. 2021 May;36(5):704-709
7. Aparisi A et al., Cardiol J. 2020;27(5):524-532
8. Jain SA et al., Journal of Structural Heart Disease, Feb 2016, Vol 2, Issue 1:15-32

### Occlutech is a leading specialist provider of minimally invasive cardiac devices

Our mission is to improve the quality of life for people with heart conditions. The vision is to become a leading global specialist in cardiac devices, addressing congenital heart defects, stroke prevention and heart failure – because every beat counts for people living with heart conditions.

## Occlutech ASD Occluder

# Treat with confidence

Conformability, control and proven performance



Occlutech International AB  
 Landskronavägen 2, SE-252 32 Helsingborg, Sweden  
 order@occlutech.com, [www.occlutech.com](http://www.occlutech.com)



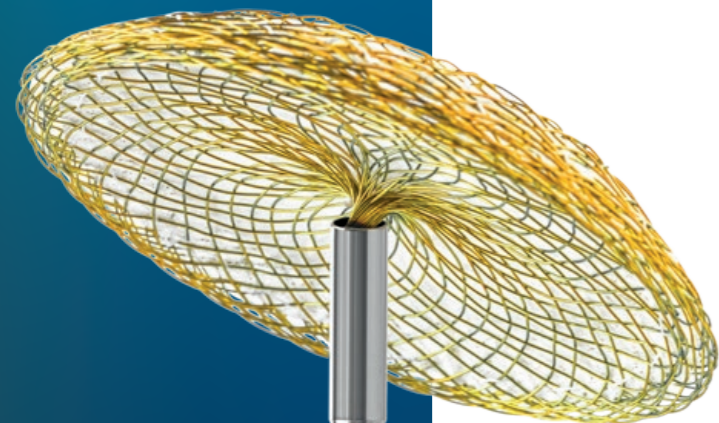
Not available in all geographies. Please contact your Occlutech representative about the availability of Occlutech products in your area. This brochure is not intended for US market. © Occlutech. All rights reserved. Occlutech is a registered trademark. MM\_ASD\_002\_04

An extensive  
and global  
footprint

>100,000  
Units delivered<sup>1</sup>

>5,000  
Published patients<sup>2</sup>

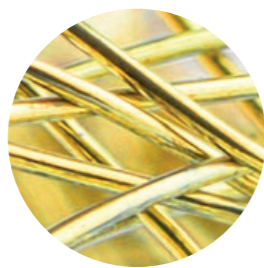
**Global Reach**  
Including FDA approval



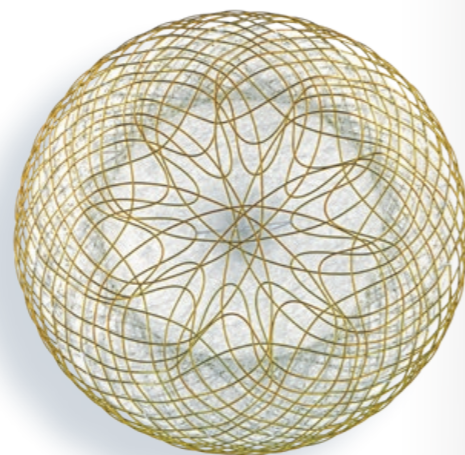
## Treat with **confidence**

The unique design of the Occlutech ASD occluder effectively close ASDs while respecting the surrounding anatomies and maintaining device structural integrity.

### **Conformability** for a reliable ASD closure<sup>3,4</sup>



**Unique and Optimized braiding** to give flexibility, conforming to the various ASD anatomies, even the challenging ones.<sup>3-6</sup>

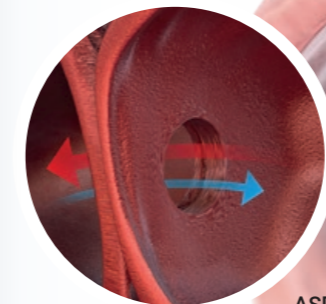


**Optimized LA disc design**, with less exposed material and no disc hub, to minimize potential thrombus formation and promote endothelialization.<sup>3-8</sup>

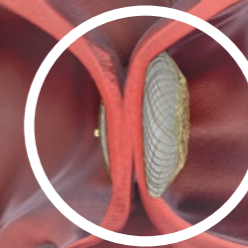
### **Control** for a safe and accurate positioning<sup>3,4,6,7</sup>



**Unique ball-connector** and force-free angulation up to 50 degrees facilitating implantation and allowing septal alignment prior to release.<sup>3,5</sup>



ASD defect



Occlutech ASD  
Occluder delivered



### **Proven performance** for an effective ASD closure<sup>3,4</sup>

The Occlutech ASD Occluder offers a proven, safe and effective solution to close ASDs as shown in randomized controlled trial, prospective and retrospective studies.<sup>2</sup>

**99.1%**

Successful device placement  
at first attempt.

**High success rate**

and low complication rates even in challenging anatomies.<sup>3,4,7</sup>

**19.8%**

Shorter procedure duration  
vs. competitive ASD device

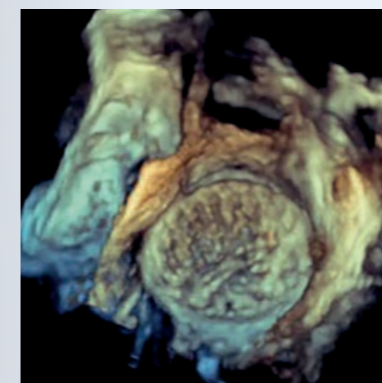
**Short procedure time<sup>3</sup>**

**98%**

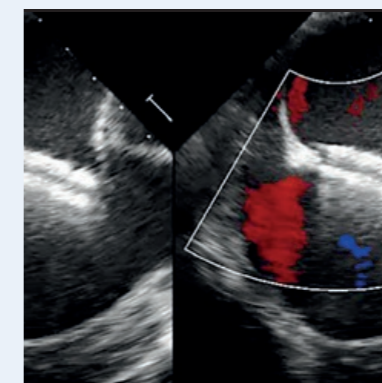
5-year closure rate

**Effective closure**

at 5-year follow-up.<sup>4</sup>



3D TEE image of an implanted Occlutech  
ASD Occluder.



Alignment of the Occluder to the Septum.



50° angulation of Delivery System vs Occluder hub.